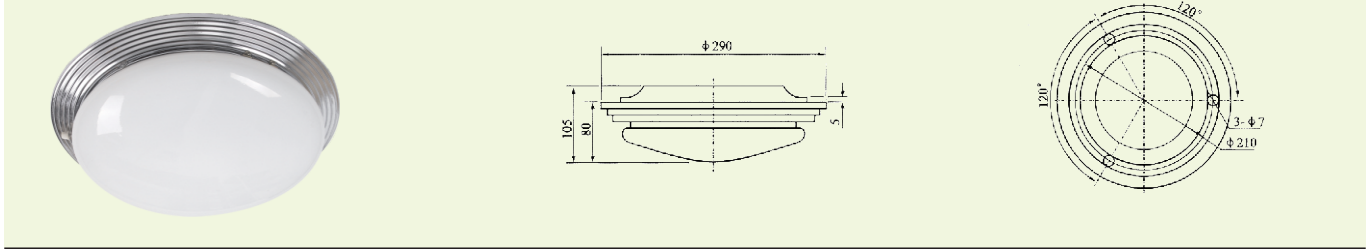
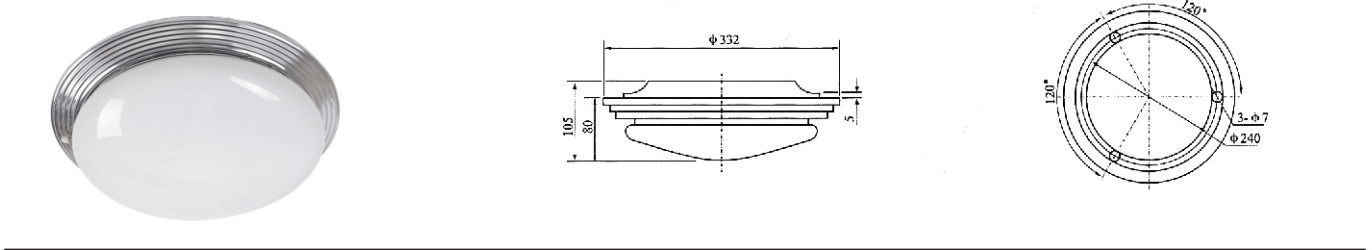


荧火蓬顶灯 CEILING LIGHT

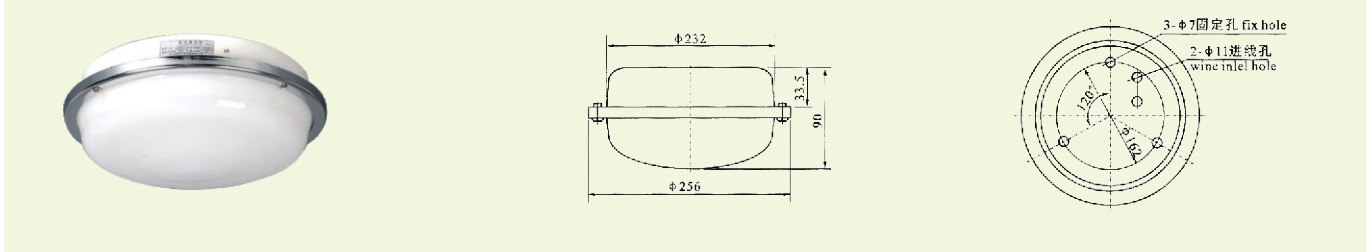
单泡蓬顶灯CPD1-1 Single-bulb ceiling light



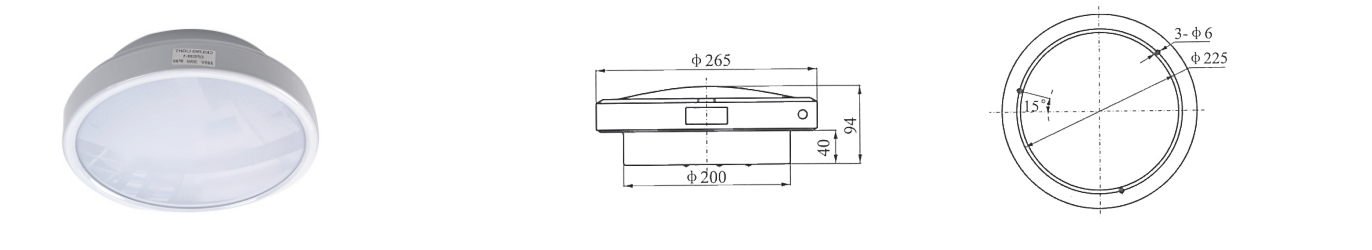
双泡蓬顶灯CPD1-2 Double-bulb ceiling light



单泡蓬顶灯CPD2-1 Single-bulb ceiling light



圆形荧光蓬顶灯CPD30-1 round fluorescent ceiling light



适用范围 The scope of application

适用于船舶舱室居住，办公及文娱室等场所照明。

Applied to the illumination in residence cabin, office and entertainment room etc. of ship.

产品特点 Products characteristic

1. 钢质外壳，呈嵌入式，乳白色灯罩。
2. 灯具可配有B15d灯座,用于24V/15W应急灯泡照明，其灯罩的边缘标有 标志，订货时请注明需应急装置。

1. Steel shell, recessed type, milk white lampshade.
2. The light equipped with B 15d lamp holder, used for illumination of 24V/15W emergency bulb, the edge of lampshade marks the marking, remark clear that need the emergency device when order.

规格: Specifications

型号 Type	电压 Voltage	功率 Power	光源 Illuminant	灯体材质 material	灯头 Lamp holder	防护等级 protection class	重量 Weight
CPD1-1	110V/220V	60W		钢质steel	E27	IP20	1.85kg
CPD2-1	110V/220V	60W	白炽灯incandescent	钢质steel	E27	IP34	1.5kg
CPD1-2	110V/220V	60W×2		钢质steel	E27	IP20	2.2kg
CPD30-1	110V/220V	30W	圆形荧光灯管Round fluorescent tube	钢质steel	G10q	IP20	3.5kg