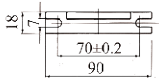
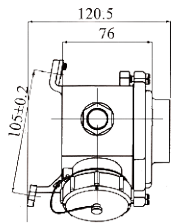
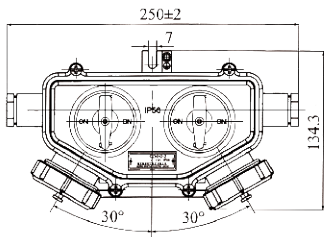
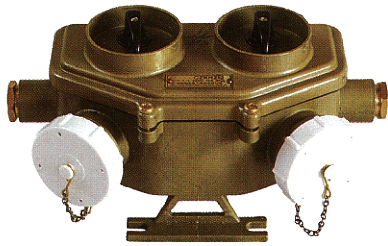


船用双联铜质带开关插座
MARINE DUAL BRASS SOCKET WITH SWITCH



适用范围:

安装在舰船上，供舰船交直流低电压电器线路连接、接通与分断作用。

产品特点:

1. 产品外壳采用优质铸铜压铸成型而成，表面浸丙烯酸清漆，外观表面平整光滑、色泽均匀，耐候性、耐腐蚀性优良
2. 单级拔出力 $\geq 4N$;
3. 导电部分温升 $\leq 40K$;

采用标准:

CB 3412-1992

The scope of application:

Installed in the naval ship, used for connecting cutting on or off the appliance circuit with AC or DC low-voltage.

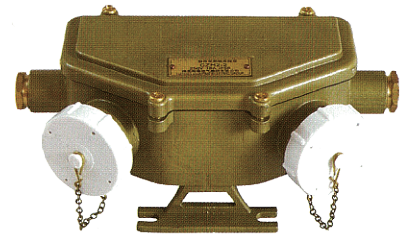
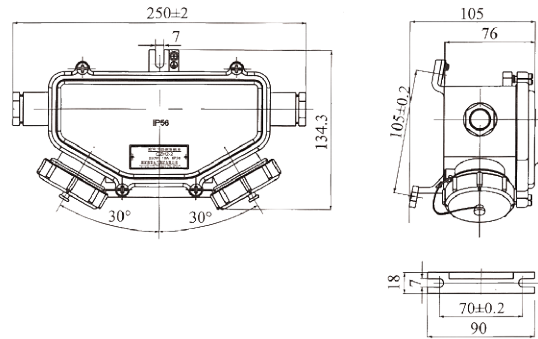
Products characteristic:

1. The shell is made of good quality cast brass, surface leaching acrylic varnish, with smooth surface, uniform color, excellent weather ability and corrosion-resisting.
2. The single pole pullout force should be not less than 4N;
3. The temperature rise of conductive part should not exceed 40K;

Production authentication:

CB 3412-1992

型号Type	CZKH2-2
额定电压 Rated voltage	250V
额定电流 Rated current	16A 2P+E
重量Weight	Kg
防护等级Protection class	IP56
电缆外径Cable outside diameter	$\Phi 14 \sim \Phi 16$



CZH2-2船用双联铜质插座
Marine dual brass socket

适用范围:

安装在舰船上, 供舰船交直流低电压电器线路连接、接通与分断作用。

产品特点:

1. 产品外壳采用优质铸铜压铸而成, 表面浸丙烯酸清漆, 外观表面平整光滑、色泽均匀, 耐候性、耐腐蚀性优良
2. 单级拔出力 $\geq 4N$;
3. 导电部分温升 $\leq 30K$;

采用标准:

CB 3412-1992

The scope of application:

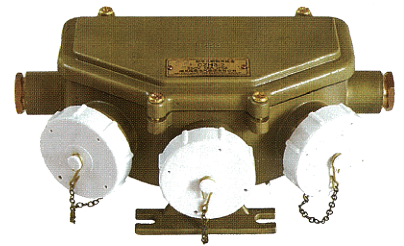
Installed in the naval ship, used for connecting cutting on or off the appliance circuit with AC or DC low-voltage.

Products characteristic:

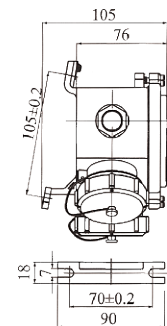
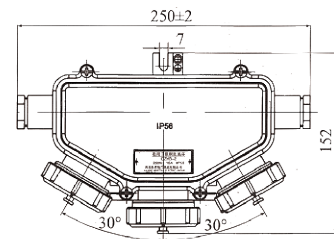
1. The shell is made of good quality cast brass, surface leaching acrylic varnish, smooth surface, uniform color, excellent weather ability and corrosion-resisting.
2. The single pole pullout force should be not less than 4N;
3. The temperature rise of conductive part should not exceed 30K;

Production authentication:

CB 3412-1992



CZH3-2船用三联铜质插座
Marine triple brass socket



型号Type	CZH2-2	CZH3-2
额定电压 Rated voltage	250V	
额定电流 Rated current	16A 2P+E	
重量Weight		
防护等级 Protection class	IP56	
电缆外径 Cable outside diameter	$\Phi 14 \sim \Phi 16$	