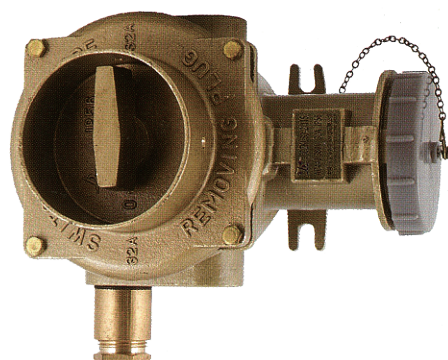


接线示意图  
wiring sketch map



**技术特性:**

1. 供舰船交直流低电压电器线路连接、接通与分断电路用;
2. 插头单极拔出应为  $\geq 4N$ ;
3. 导电部分的温升不超过  $40K$ ;
4. 金属外表有可靠接地装置;
5. 盖板螺丝为 M6 防松螺钉。

**产品认证**

1. 通过欧共体 CE 认证;
2. 通过中国船级社 "CCS" 认证。

**采用标准**

CB/T 3897-2011

**Technical characteristic**

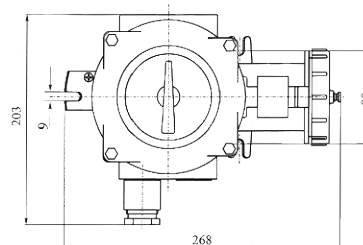
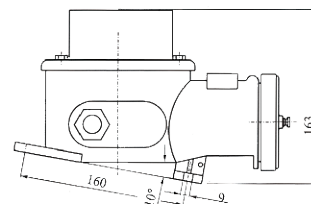
1. Used for connecting cutting on or off the appliance circuit with AC or DC low-voltage.
2. The single pole of plug pulled out should be not less than  $4N$ .
3. The temperature rise of conductive part should don't exceed  $40K$ .
4. The metal shell should have reliable earthing device.
5. The screw of cover plate is M6 locking screw.

**Production authentication**

1. Approved by CE.
2. Approved by CCS (China Classification Society).

**Adopt standard**

CB/T 3897-2011



型号 Type	CZKLS3-2/115	CZKLS3-2/215	CZKLS3-2/415	CZKLS3-2/515	CZKLS3-2/715
示意图 Sketch map	-O	O-	=O	O=	-O-
重量 Weight	5.6kg	5.6kg	5.9kg	5.9kg	5.9kg
额定电压 Rating voltage	AC440/380V				
额定电流 Rating current	32A				
防护等级 Protection class	IP56				
电缆外径 Cable outside Diameter	$\phi 14 - \phi 16$				