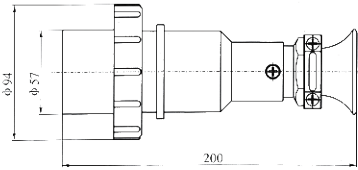


船用铜质大电流水密插头

MARINE BRASS HIGH-CURRENT WATER-TIGHT PLUG SOCKET WITH SWITCH



额定电压Rating voltage: AC440/380V
 额定电流Rating current: 32A
 防护等级Protection class: IP56
 电缆外径Cable outside Diameter: $\phi 18 - \phi 20$
 重量Weight: 1.6kg

技术特性:

1. 供舰船交直流低电压电器线路连接、接通与分断电路用;
2. 插头单极拔出应为 $\geq 4N$;
3. 导电部分的温升不超过40K。

产品认证

1. 通过欧共体CE认证;
2. 通过中国船级社"CCS"认证。

采用标准

CB/T 3897-2011

Technical characteristic

1. Used for connecting cutting on or off the appliance circuit with AC or DC low-voltage.
2. The single pole of plug pulled out should be not less than 4N.
3. The temperature rise of conductive part should don't exceed 40K.

Production authentication

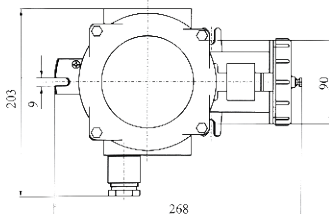
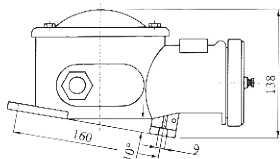
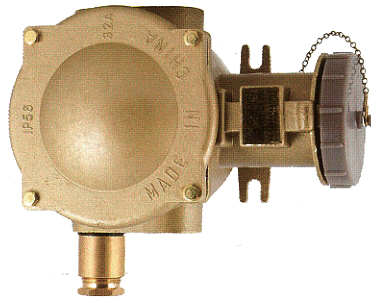
1. Approved by CE.
2. Approved by CCS(China Classification Society).

Adopt standard

CB/T 3897-2011

船用铜质大电流水密插座

MARINE BRASS HIGH-CURRENT WATER-TIGHT PLUG SOCKET WITH CATOR LIGHT



技术特性:

1. 供舰船交直流低电压电器线路连接、接通与分断电路用;
2. 插头单极拔出应为 $\geq 4N$;
3. 导电部分的温升不超过40K;
4. 金属外表有可靠接地装置;
5. 盖板螺丝为M6防松螺钉。

产品认证

1. 通过欧共体CE认证;
2. 通过中国船级社"CCS"认证。

采用标准

CB/T 3897-2011

Technical characteristic

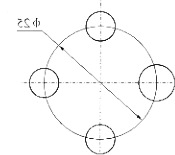
1. Used for connecting cutting on or off the appliance circuit with AC or DC low-voltage.
2. The single pole of plug pulled out should be not less than 4N.
3. The temperature rise of conductive part should don't exceed 40K.
4. The metal shell should have reliable earthing device.
5. The screw of cover plate is M6 locking screw.

Production authentication

1. Approved by CE.
2. Approved by CCS(China Classification Society).

Adopt standard

CB/T 3897-2011



示意图Sketch map

型号Type	CZS3-2/115	CZS3-2/215	CZS3-2/415	CZS3-2/515	CZS3-2/715
示意图Sketch map	-O	O-	=O	O-	-O-
重量Weight	4.7kg	4.7kg	4.9kg	4.9kg	4.9kg
额定电压Rating voltage	AC440/380V				
额定电流Rating current	32A				
防护等级Protection class	IP56				
电缆外径Cable outside Diameter	$\phi 14 - \phi 16$				