

技术特性:

1. 供舰船交直流低电压电器线路连接、接通与分断电路用;
2. 导电部分的温升不超过40K;
3. 金属外表有可靠接地装置;
4. 盖板螺丝为M6防松螺钉。

产品认证 1. 通过欧共体CE认证; 2. 通过中国船级社"CCS"认证。

采用标准 DIN89250

Technical characteristic

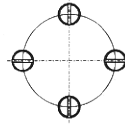
1. Used for connecting cutting on or off the appliance circuit with AC or DC low-voltage.
2. The temperature rise of conductive part should don't exceed 40K.
3. The metal shell should have reliable earthing device.
4. The screw of cover plate is M6 locking screw.

Production authentication

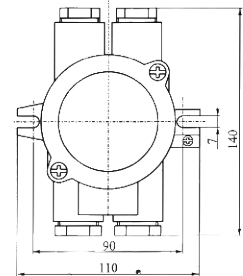
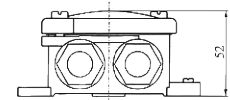
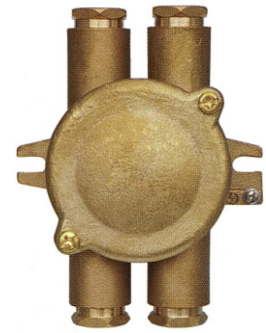
1. Approved by CE.
2. Approved by CCS(China Classification Society).

Adopt standard DIN89250

	-O-	O=	-O-	-O=	-O-	=O=
代号Code	1151	1150	1152	1156	1153	1155
一般电缆型号General cable type	JXH201	JXH202	JXH301	JXH302	JXH401	JXH402
屏蔽电缆型号Shield cable type	JXH211	JXH212	JXH311	JXH312	JXH411	JXH412
重量Weight	0.80kg	0.80kg	0.90kg	0.90kg	1.00kg	1.00kg
防护等级Protection class	IP56					
电缆外径Cable outside Diameter	φ 14- φ 16					



接线示意图wiring sketch map



技术特性

1. 供舰船交直流低电压电器线路连接、接通与分断电路用;
2. 插头单极拔出应为≥4N;
3. 导电部分的温升不超过40K。

产品认证 1. 通过欧共体CE认证; 2. 通过中国船级社"CCS"认证。

采用标准 DIN89267

Technical characteristic

1. Used for connecting cutting on or off the appliance circuit with AC or DC low-voltage.
2. The single pole of plug pulled out should be not less than 4N.
3. The temperature rise of conductive part should don't exceed 40K.

Production authentication

1. Approved by CE.
2. Approved by CCS(China Classification Society).

Adopt standard DIN89267

代号Code	1142/MS				
插销示意图Plug pin diagram					
电压Voltage	24V	125V	250V	500V	500V
一般电缆型号General cable type	CTH101-1	CTH101-2	CTH101-3	CTH101-4	CTH101-5
屏蔽电缆型号Shield cable type	CTH111-1	CTH111-2	CTH111-3	CTH111-4	CTH111-5
重量Weight	0.56kg	0.57kg	0.57kg	0.57kg	0.58kg
防护等级Protection class	IP56				
电缆外径Cable outside Diameter	φ 14- φ 16				

