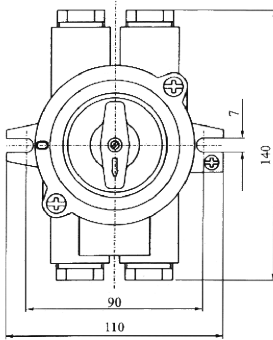
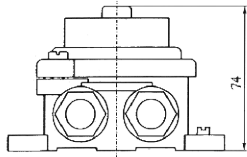
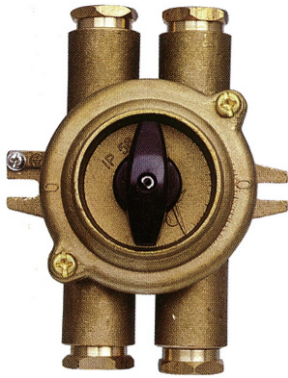
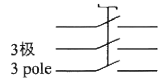
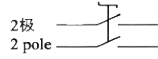


10A/16A船用铜质开关  
10A/16A MARINE BRASS SWITCH



防护等级: IP56  
电缆外径:  $\phi 14-\phi 16$   
Protection class: IP56  
Cable outside Diameter:  $\phi 14-\phi 16$



接线示意图wiring sketch map

**技术特性**

1. 供舰船交直流低电压电器线路连接、接通与分断电路用;
2. 插头单极拔出应为 $\geq 4N$ ;
3. 导电部分的温升不超过40K;
4. 金属外表有可靠接地装置;
5. 盖板螺丝为M6防松螺钉。

**产品认证**

1. 通过欧共体CE认证;
2. 通过中国船级社“CCS”认证。

**采用标准**

DIN89270

**Technical characteristic**

1. Used for connecting cutting on or off the appliance circuit with AC or DC low-voltage.
2. The single pole of plug pulled out should be not less than 4N.
3. The temperature rise of conductive part should don't exceed 40K.
4. The metal shell should have reliable earthing device.
5. The screw of cover plate is M6 locking screw.

**Production authentication**

1. Approved by CE.
2. Approved by CCS(China Classification Society).

**Adopt standard**

DIN89270

	电压Voltage	24V	125V	250V	380V/440V	380V/440V
O	代号Code	1133				
	一般电缆型号General cable type	HH101-1	HH101-2	HH101-3	HH101-4	HH101-5
	屏蔽电缆型号Shield cable type	HH111-1	HH111-2	HH111-3	HH111-4	HH111-5
	重量Weight	0.80kg				
-O	代号Code	1133/D				
	一般电缆型号General cable type	HH201-1	HH201-2	HH201-3	HH201-4	HH201-5
	屏蔽电缆型号Shield cable type	HH211-1	HH211-2	HH211-3	HH211-4	HH211-5
	重量Weight	1.00kg				
O=	代号Code	1133/2				
	一般电缆型号General cable type	HH202-1	HH202-2	HH202-3	HH202-4	HH202-5
	屏蔽电缆型号Shield cable type	HH212-1	HH212-2	HH212-3	HH212-4	HH212-5
	重量Weight	1.00kg				
-O=	代号Code	1133/3				
	一般电缆型号General cable type	HH302-1	HH302-2	HH302-3	HH302-4	HH302-5
	屏蔽电缆型号Shield cable type	HH312-1	HH312-2	HH312-3	HH312-4	HH312-5
	重量Weight	1.10kg				
=O=	代号Code	1133/2D				
	一般电缆型号General cable type	HH402-1	HH402-2	HH402-3	HH402-4	HH402-5
	屏蔽电缆型号Shield cable type	HH412-1	HH412-2	HH412-3	HH412-4	HH412-5
	重量Weight	1.10kg				