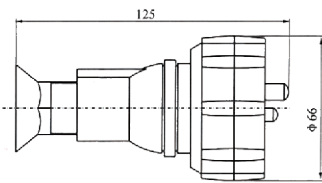
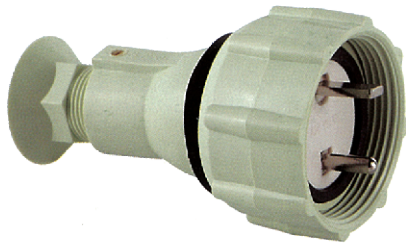


10A船用尼龙插座接线盒
10A MARINE NYLON PLUG JUNCTION BOX



技术特性:

1. 供舰船交直流低电压电器线路连接、接通与分断电路用;
2. 插头单极拔出应为 $\geq 4N$;
3. 导电部分的温升不超过40K。

产品认证

1. 通过欧共体CE认证;
2. 通过中国船级社"CCS"认证。

采用标准

DIN89267

Technical chracteristic

1. Used for connecting cutting on or off the appliancate circuit with AC or DC low-voltage.
2. The single pole of plug pulled out should be not less than 4N.
3. The temperature rise of conductive part should don't exceed 40K.

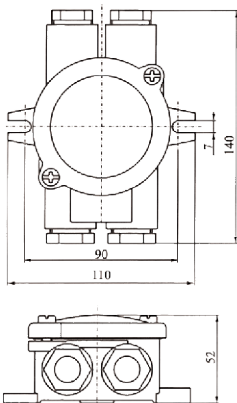
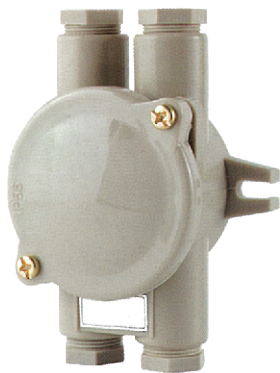
Production authentication

1. Approved by CE.
2. Approved by CCS(China Classification Society).

Adopt standard

DIN89267

代号Code	1142/FS				
插销示意图Plug pin diagram					
电压Voltage	24V	125V	250V	380V/440V	380V/440V
型号Type	CTS101-1	CTS101-2	CTS101-3	CTS101-4	CTS101-5
重量Weight	0.2kg	0.2kg	0.2kg	0.2kg	0.2kg
防护等级Protection class	IP56				
电缆外径Cable outside Diameter	$\phi 14 - \phi 16$				



技术特性:

1. 供舰船交直流低电压电器线路连接、接通与分断电路用;
2. 导电部分的温升不超过40K;
3. 盖板螺丝为M6防松螺钉。

产品认证

1. 通过欧共体CE认证;
2. 通过中国船级社"CCS"认证。

采用标准

DIN89250

Technical chracteristic

1. Used for connecting cutting on or off the appliancate circuit with AC or DC low-voltage.
2. The temperature rise of conductive part should don't exceed 40K.
3. The screw of cover plate is M6 locking screw.

Production authentication

1. Approved by CE.
2. Approved by CCS(China Classification Society).

Adopt standard

DIN89250



	-O-	O-	-O-	-O-	-O-	=O-
代号Code	1151/FS	1150/FS	1152/FS	1156/FS	1153/FS	1155/FS
型号Type	JXS201	JXS202	JXS301	JXS302	JXS401	JXS402
重量Weight	0.20kg	0.20kg	0.21kg	0.21kg	0.22kg	0.22kg
防护等级Protection class	IP56					
电缆外径Cable outside Diameter	$\phi 14 - \phi 16$					